

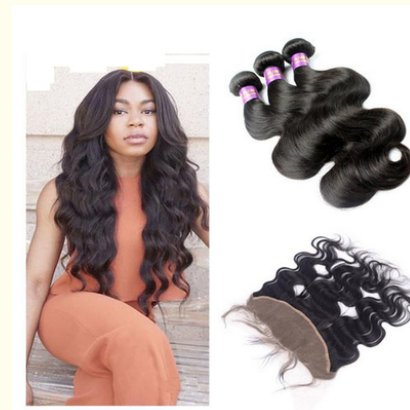


## 13" X 4" Ear To Ear Lace Top Closure Virgin Hair / Silky Straight Human Hair

Our Product Introduction

### Basic Information

- Place of Origin: 00
- Brand Name: 2
- Certification: 3
- Model Number: TCLRLFSTW
- Minimum Order Quantity: 100
- Price: Negotiation
- Packaging Details: 付款方式
- Delivery Time: 供 能力
- Payment Terms: 期限
- Supply Ability: 常 包装



### Product Specification

- Item Type: Lace Frontal
- Hair Material: 100% Human Hair
- Lace Size: 4x13 And 2x13 Available
- Hair Density: 130%, Other Density Can Be Customized
- Net Weight: 35g-75g
- Base Material: Swiss Lace
- Made Method: Hand Tied
- Hair Texture: Silky Straight
- Human Hair Type: Brazilian Virgin Hair
- Metal: Type Iron
- Thickness: 203\*193\*15cm
- Box Type: Self Erecting Boxes
- Radiation Power: 840~1300MW
- Metal Type: Iron
- Universal Type: Fit For 80% Model Cars' Injectors

for more products please visit us on [ladyshairextensions.com](http://ladyshairextensions.com)

## Product Description

### 13" x 4" Ear to Ear Lace Frontal Closure Silky Straight Lace Top Closure

#### Item Description

Hair Material	100 % Virgin Hair( Brazilian, peruvian, Mlaysian Hair Lace Closure )
Hair Grade	Grade 7A (100% Pure Virgin)
Hair Length	8"-24" in stock
Hair Weight	About 30g/piece
Hair Colors	natural color 1B#
Hair texture	straight /body wave/ loose wave /deep wave /curly /spring curl /spiral curl etc.
Hair Package	Transparent poly bag
Hair Feature	Extremely soft, comfortable
Delivery time	Stock goods within 24 hours Sample order within 3 days Quantity order within 7 days
Payment	T/T, Western Union, Money Gram, Paypal
Shipping	UPS/EMS/TNT/DHL/Fedex/by air or by ship

#### Product Superiority

1. 100% unprocessed virgin hair for sale, About 30g/piece

Withstand the test of real hair( Lace Closure )

TEST 1:

Pick a little of hair and then burn it.

Human hair smells like protein and become ash after pinching.

Synthetic hair smells with plastic and becomes a sticky ball.

TEST 2:

The melting point of synthetic hair is 180-200°C while human hair higher.

Human hair still keeps the original state.

Synthetic hair will be parching.

2. The perfect details from the beginning to the end.( Lace Closure )

#### CURTAIN

Double layers machine made wefts to avoid shedding

100% unprocessed virgin human hair

#### MATERIAL

Natural color, can be dyed, ironed, bleached

Full cuticle and nutrition to ensure no tangle

No potion treatment, natural shine and luster

END

Soft and smooth, the curl holds after washing, long lasting

Full length, thickness bottom, no dry end, the tip of our hair is one inch more

3. Various catalogues, various choices OEM is accepted( Lace Closure )

Different texture:

deep wave, body wave, spiral curl, spring curl, natural wave, loose wave, curly wave, romance curl, straight etc.

Different hair type:

Hair extension, lace closure (lace frontal), silk base closure, lace wigs(full lace wigs and lace front wigs), hair bulk, PU tape hair, Loop hair.(any color, any styles can be customized)

Various quality grade:4A, 5A,7A, 8A etc.

Custom Made:OEM is accepted

#### Return Policy

If our hair has any defect or you do not like the color or style of our hair, you can exchange them, but you need to pay for the back and go shipping fee.

Before you return our products, please be sure that the goods in the original condition as it was sent to you.

If the goods have been altered in any way, then we cannot do an exchange.

## Product Show



**Ellawig companys**



+86-15399918960



service@ellawigss.com



ladyshairextensions.com

Room 501, unit 6, building 20, North Lane, east flower market, Beijing